



### INSTALLATION INSTRUCTION: Gateway RF4 Wirepas

The Gateway RF4 Wirepas (Gateway in the remainder of this document) is a product in the Luminext program for dynamic dimmable street lighting with remote management. The Gateway automatically forms a wireless-sensor-and-control network with the surrounding OLC400 Zhaga Wirepas controllers that is self-organizing and self-synchronizing. There are two possible mounting options which will be described in this document.

#### Safety



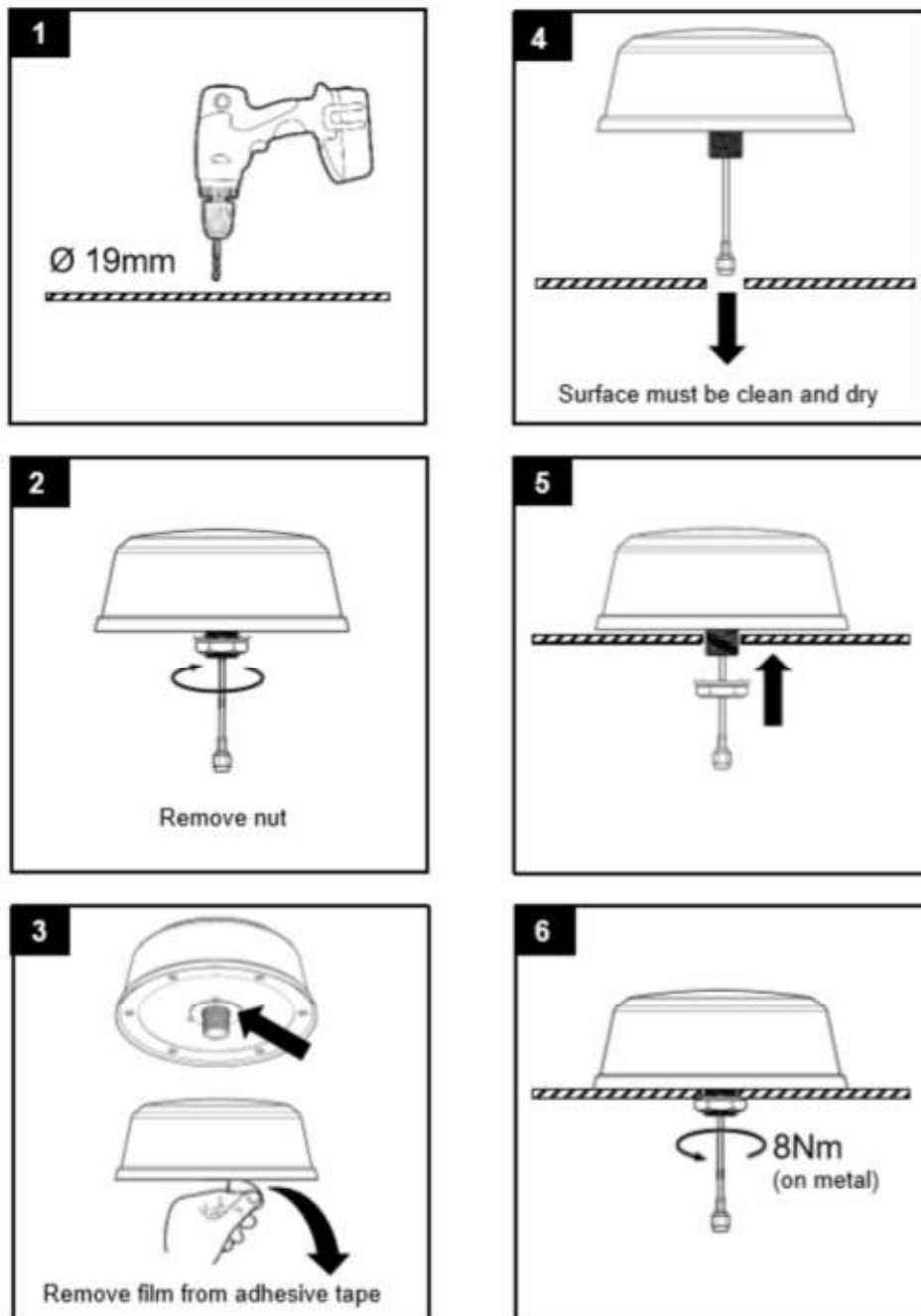
- Installation should be performed by qualified personnel only.
- Adhere strictly to the installation instruction below to avoid danger and damage to the Gateway.
- Disconnect power at the source before installation, inspection or removal.



- Do not use the Gateway if it is damaged.
- The electrical installation must be in conformance with the national legislation and relevant standards.
- The mains connection of the Gateway must be provided with a 2A fuse.

## Mounting on top of cabinet

1. Mount the Gateway on top of the cabinet by following the steps below.



2. Mount the supplied 24Vdc power supply on a din-rail in the cabinet.
3. Connect the 2 wires from the gateway to the 24Vdc power supply (+ and -).
4. Connect the 230Vac to the power supply.
5. Switch ON the power supply.
6. Check if the gateway status changes to ONLINE in Luminizer.

## Mounting to the pole



1. Mount the gateway with the bracket to the pole using band-it for instance.
2. Drill a hole in the pole, put the 230Vac supply cable through both the housing and the pole.
3. Connect the 230Vac cable to the 24vdc power supply in the housing.
4. Connect the 230Vac to the junction box inside the pole.
5. Power the gateway and check in Luminizer if the Gateway status changes to ONLINE.

## Usage

The Gateway will control the lamps connected to the surrounding OLC400 network.

## Compliance



This product complies with the European directives and relevant standards for low voltage, EMC, RED, REACH and RoHS. The Gateway contains an 2.4 GHz and GSM radio. The applied frequency of the GSM radio is within the band 880 - 960 MHz or 1710 - 1880 MHz and the maximum transmit power is +35 dBm or +32 dBm.

Hereby, Luminext declares that the radio equipment type Gateway is in compliance with Directive 2014/53/EU. The full text of the EU declaration of conformity is available at [luminext.eu](http://luminext.eu)

## Repair

Do not open this product. In case of failure the Gateway must be replaced.



## Recycling

Do not dispose this product as household waste, bring it to an appropriate collection point for recycling.